

COMPANY OVERVIEW

WHO WE ARE

Informa operates at the heart of the Knowledge & Information Economy. It is one of the world's leading business intelligence, academic publishing, knowledge and events businesses.

We serve customers in many different industries, from Life Sciences to Finance, Beauty, Education, Agriculture and TMT. Through our various products and services, we provide knowledge, intelligence, insight, analysis, connections and networking, all designed to create advantage for our customers.

We are organised around four Operating Divisions, each owning a portfolio of leading brands.

We also have a fifth Division, **Global Support**, which is the team behind the teams, providing functional services for the Operating Divisions such as Strategy & Planning, Talent, Shared Services, Technology, Finance, Communications and Legal.

Academic Publishing

Business Intelligence

Global Exhibitions

Knowledge & Networking



Global Support

WHERE WE OPERATE

With more than 6,500 employees globally, we have a presence in all major geographies, including North America, South America, Asia, Europe, the Middle East and Africa.

>6500 COLLEAGUES >50 NATIONALITIES >20 COUNTRIES



KEY FIGURES

Group Revenue
£1137m

Group Adjusted Profit
£334m

Employees
>6,500

Dividend per Share
19.3p



Revenue by Geography

- United Kingdom - 13%
- North America - 37%
- Cont. Europe - 21%
- Rest of World - 29%



Revenue by Type

- Subscriptions - 41%
- Copy Sales - 19%
- Exhibitors - 17%
- Attendees - 15%
- Sponsorship - 6%
- Advertising - 2%



Employees by Region

- United Kingdom - 42%
- North America - 32%
- Rest of World - 19%
- Europe - 7%

LEADERSHIP

BOARD OF DIRECTORS



Derek Mapp
Non-Executive Chairman

7 YEARS



7 Other Non-Executive Directors (NED)
>30 yrs NED experience at Informa

>100 yrs Exec experience:



EXECUTIVE MANAGEMENT TEAM



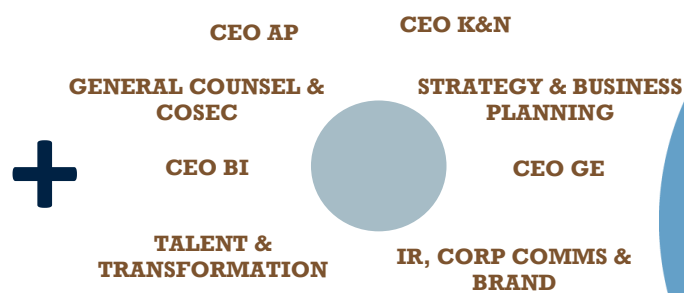
Lord Stephen A. Carter
Group Chief Executive

SINCE JAN 2014



Gareth Wright
Group Finance Director

SINCE JULY 2014
DEPUTY CFO SINCE 2009



FAST FACTS

- Listed on the London Stock Exchange with the ticker **INF**
- Sponsored Level 1 ADR programme (BNY Mellon) with the ticker **IFJPY**
- Market Capitalisation >£3.3bn
- Head Office: 5 Howick Place, Victoria, London, SW1P 1WG, UK; Tel: +44 (0) 20 7017 5000